

41-167

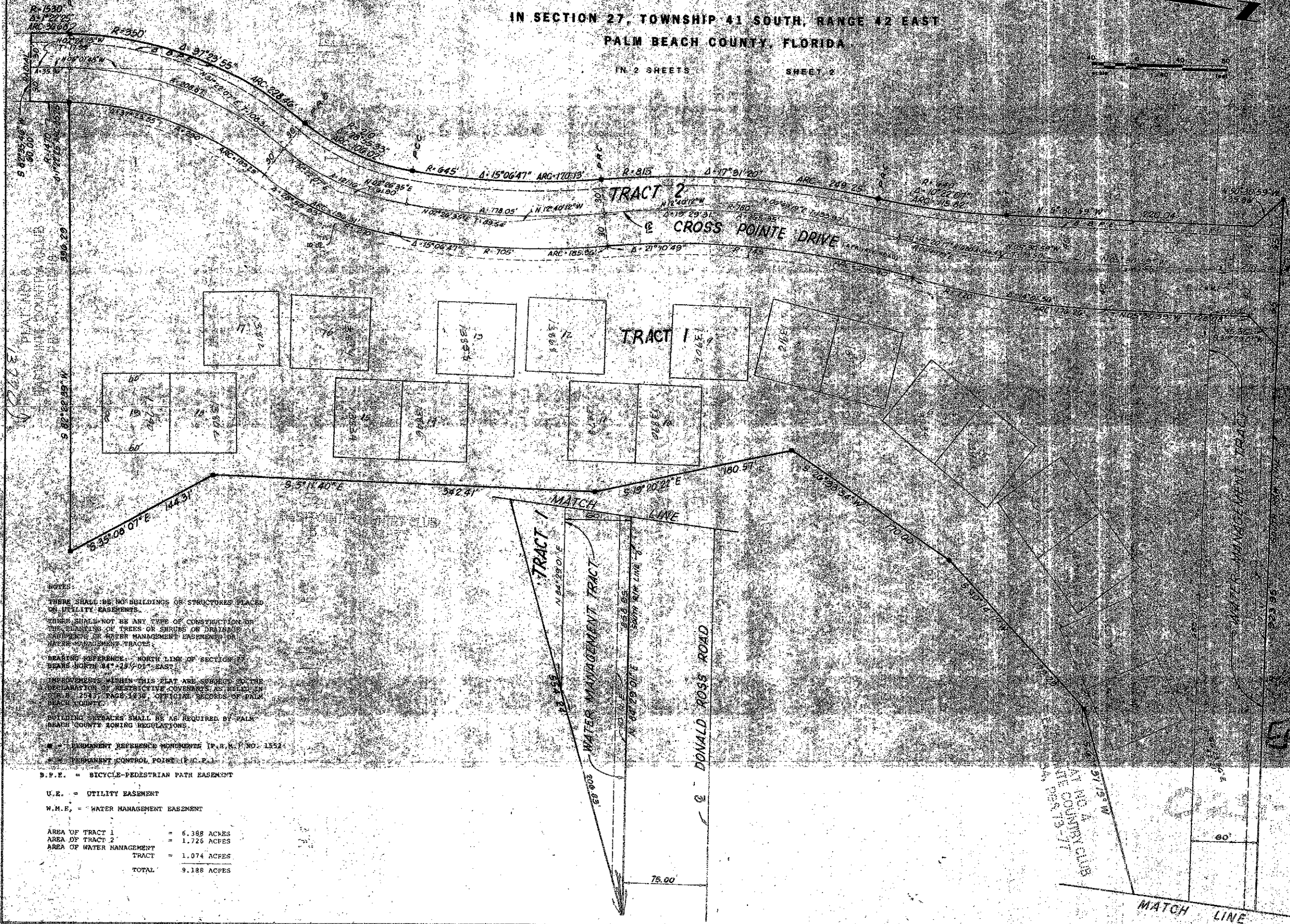
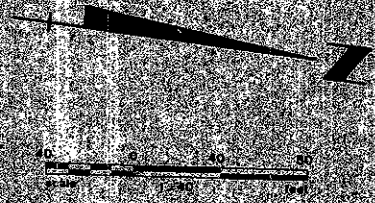
PLAT NO. 11 EASTPOINTE SUBDIVISION

167

(A PLANNED UNIT DEVELOPMENT)

IN SECTION 27, TOWNSHIP 41 SOUTH, RANGE 42 EAST
PALM BEACH COUNTY, FLORIDA

IN 2 SHEETS SHEET 2



NOTES

THERE SHALL BE NO BUILDINGS OR STRUCTURES PLACED ON UTILITY EASEMENTS.

THERE SHALL NOT BE ANY TYPE OF CONSTRUCTION OF THE REMOVAL OF TREES OR SHRUBS OR DRILLING OF WELLS OR WATER MANAGEMENT EASEMENTS OR WATER MANAGEMENT TRACTS.

BEARING REFERENCE: NORTH LINE OF SECTION 27 BEARS NORTH 44° 19' 01\"

IMPROVEMENTS WITHIN THIS PLAT ARE SUBJECT TO THE DECLARATION OF RESTRICTIVE COVENANTS AS FILED IN BOOK E. 2547, PAGE 1236, OFFICIAL RECORDS OF PALM BEACH COUNTY.

BUILDING SETBACKS SHALL BE AS REQUIRED BY PALM BEACH COUNTY ZONING REGULATIONS.

PERMANENT REFERENCE MONUMENT (P.R.M.) NO. 1552

PERMANENT CONTROL POINT (P.C.P.)

B.P.E. = BICYCLE-PEDESTRIAN PATH EASEMENT

U.E. = UTILITY EASEMENT

W.M.E. = WATER MANAGEMENT EASEMENT

AREA OF TRACT 1	= 6.388 ACRES
AREA OF TRACT 2	= 1.726 ACRES
AREA OF WATER MANAGEMENT TRACT	= 1.074 ACRES
TOTAL	9.188 ACRES

AT THE COUNTY CLERK'S OFFICE
PALM BEACH COUNTY, FLORIDA

02-11-3074

100

EAST POINTE